

THE  
EDMENTS  
BUILDING

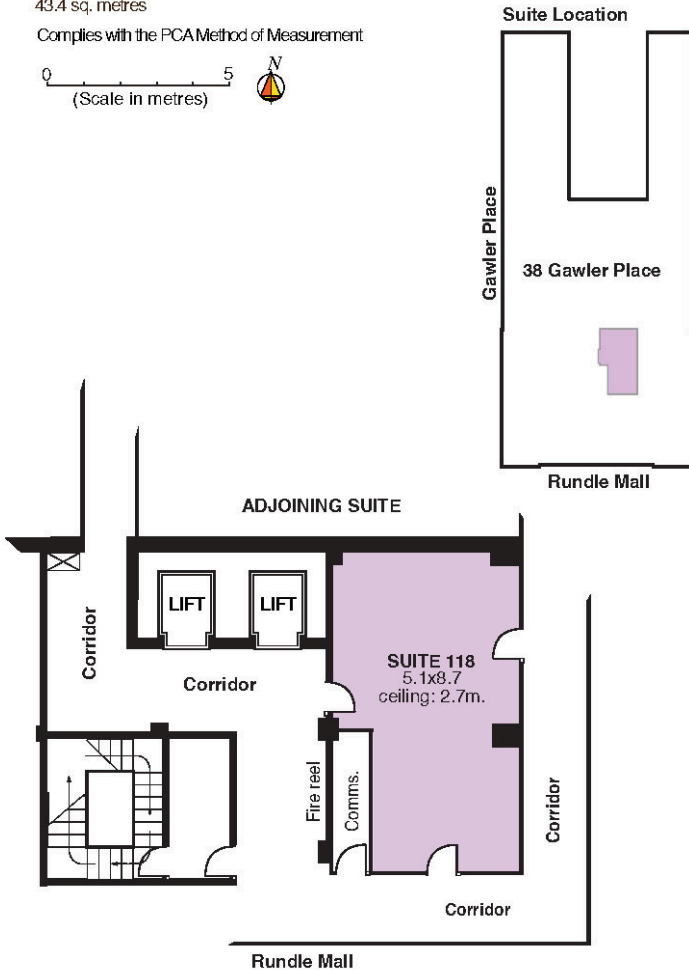
# SUITE 118

Located on level 1, Suite 118 of approximately 43sqm

38 Gawler Place, Adelaide  
Suite 118

- ESTIMATED NETT LETTABLE AREA:  
43.4 sq. metres
- Complies with the PCA Method of Measurement

0 5  
(Scale in metres)



AVAILABLE  
NOW

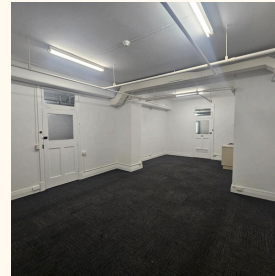
## FEATURES



Freshly painted



Water / Waste



Fully carpeted



Quiet location

## RENTAL

The Edments Building provides competitive rental costings which include all statutory charges. Electricity is charged separately and based on tenant's consumption.

## CONTACT

For enquiries or to arrange an inspection, please contact building management at 8120 0900 or via email at [admin@edmentsbuilding.com.au](mailto:admin@edmentsbuilding.com.au).

