

THE  
EDMENTS  
BUILDING

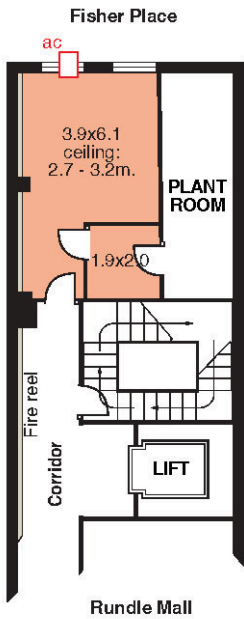
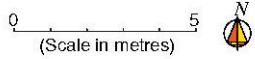
# SUITE 211

Located on level 2, Suite 211 of approximately 24sqm

**38 Gawler Place, Adelaide  
Suite 211**

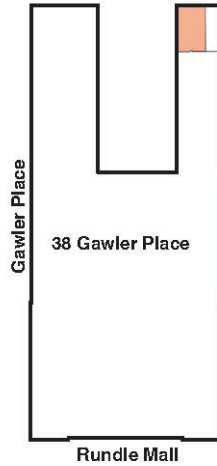
ESTIMATED NETT LETTABLE AREA:  
24.1 sq. metres

Complies with the PCAMethod of Measurement



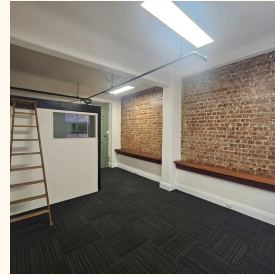
THE  
EDMENTS  
BUILDING

Suite Location



AVAILABLE  
NOW

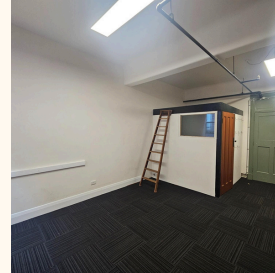
## FEATURES



Quiet location



AC in situ



Loft space



Separate storage

## RENTAL

The Edments Building provides competitive rental costings which include all statutory charges. Electricity is charged separately and based on tenant's consumption.

## CONTACT

For enquiries or to arrange an inspection, please contact building management at 8120 0900 or via email at [admin@edmentsbuilding.com.au](mailto:admin@edmentsbuilding.com.au).

