

THE
EDMENTS
BUILDING

SUITE 419

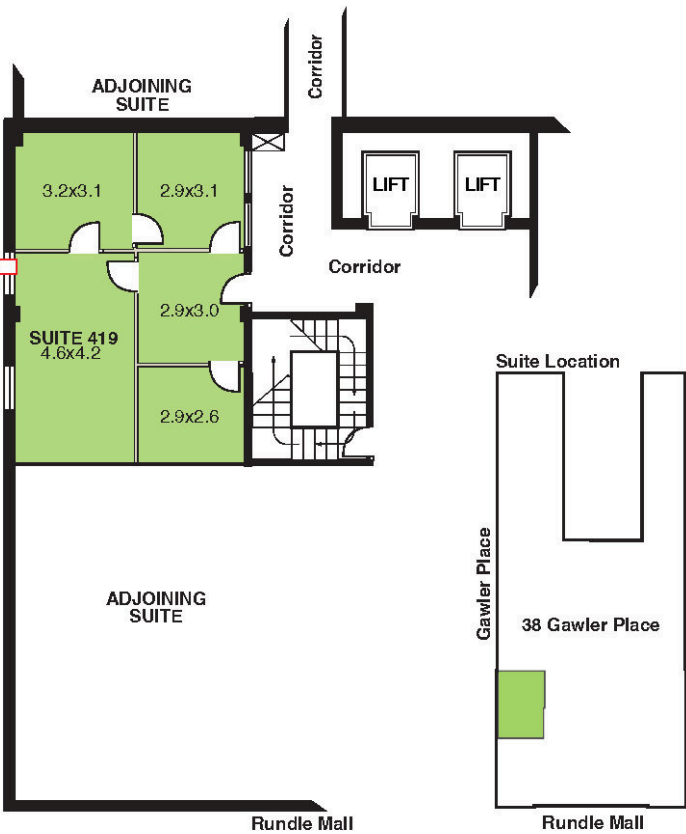
Located on level 4, Suite 419 of approximately 59.5sqm

38 Gawler Place, Adelaide
Suite 419

ESTIMATED NETT LETTABLE AREA:
59.5 sq. metres

Complies with the PCA Method of Measurement

0 5
(Scale in metres)



THE
EDMENTS
BUILDING

AVAILABLE
NOW

FEATURES



3 offices



Fully carpeted



Workspace



Waiting Room

RENTAL

The Edments Building provides competitive rental costings which include all statutory charges. Electricity is charged separately and based on tenant's consumption.

CONTACT

For enquiries or to arrange an inspection, please contact building management at 8120 0900 or via email at admin@edmentsbuilding.com.au.



www.edmentsbuilding.com.au

