

THE
EDMENTS
BUILDING

SUITE 605

Located on level 6, Suite 605 of approximately 69sqm

AVAILABLE
NOW

38 Gawler Place, Adelaide
Suite 605

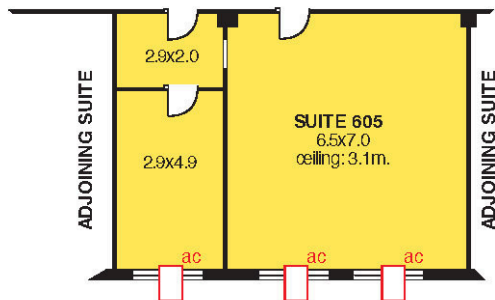
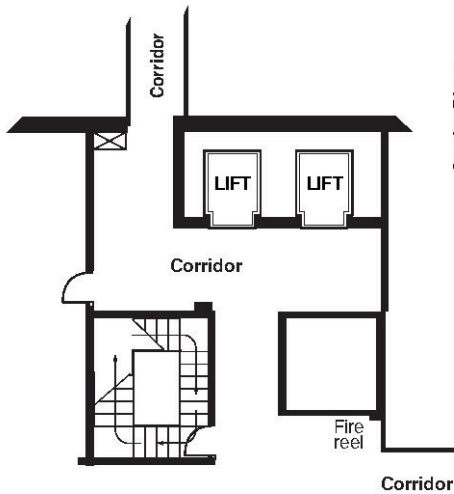
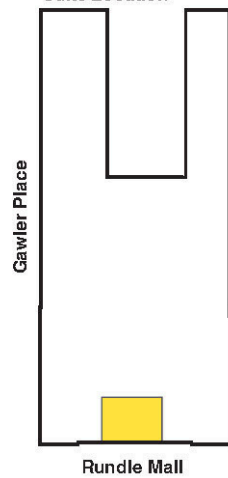
ESTIMATED NETT LETTABLE AREA:
69.2 sq. metres

Complies with the PCA Method of Measurement

0 5
(Scale in metres)

THE
EDMENTS
BUILDING

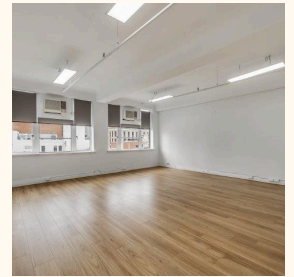
Suite Location



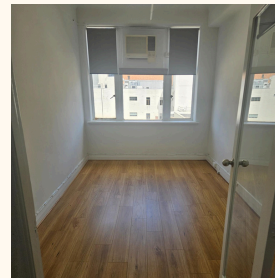
FEATURES



Open space



Natural light



Separate office



Air Conditioned

RENTAL

The Edments Building provides competitive rental costings which include all statutory charges. Electricity is charged separately and based on tenant's consumption.

CONTACT

For enquiries or to arrange an inspection, please contact building management at 8120 0900 or via email at admin@edmentsbuilding.com.au.

